



AWNINGS & OUTDOOR COMFORT

---

FABRIC COLLECTION

---



## VALANCE STYLE & BINDING COLORS

\*NOTE: These colors are representations. The actual binding color may vary.

#5 Straight with Hem



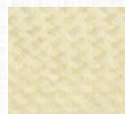
#4 Straight with Binding



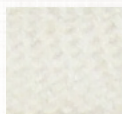
#2 Low Wave



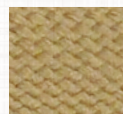
Linen  
322096



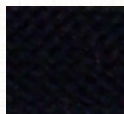
Cream  
322095



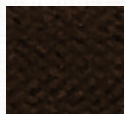
White  
322035



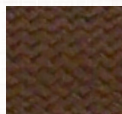
Beige  
322033



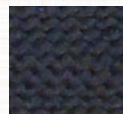
Black  
322021



Dark Brown  
322042



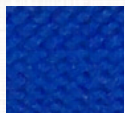
Cocoa  
322106



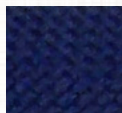
Steel  
322107



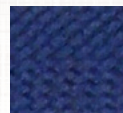
Grey  
322027



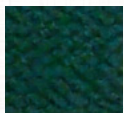
Pacific Blue  
322025



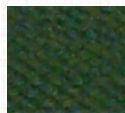
Navy Blue  
322037



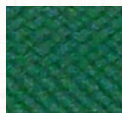
Bright Sapphire  
322101



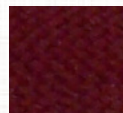
Forest Green  
322038



Olive  
322104



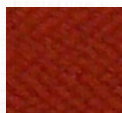
True Green  
322103



Burgundy  
322004



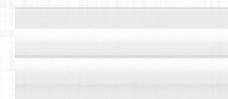
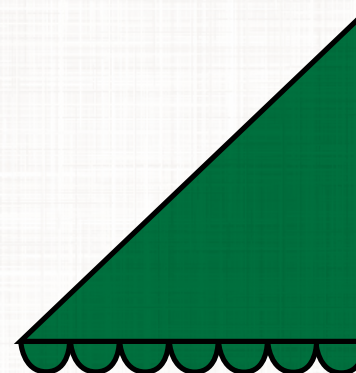
Red  
322012



Terra Cotta  
322017

## SUNBRERO PVC COLOR SELECTION CHART

\*NOTE: These colors are representations. The actual cover strip color may vary.



WHITE  
405046



BLACK  
405047



BROWN  
405048



NAVY BLUE  
405056



GREEN  
405050



SKY BLUE  
405057



CREAM  
405049



MAROON  
405055



CLAY  
405060



## BROWN FABRIC COLLECTION



314325



323052



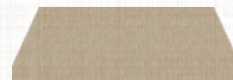
314020



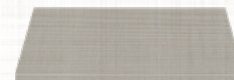
320930



323113



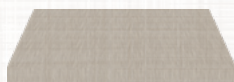
338771



323051



323149



338770



320963



320992



314403



314917



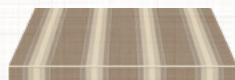
314016



323098



338639



323096



320715



320903



323035



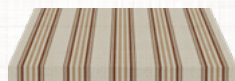
323097



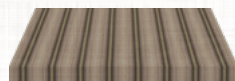
320701



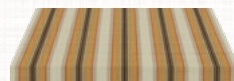
338640



364056



320721



320441



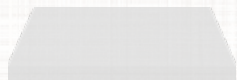
323065



323034



## GRAY FABRIC COLLECTION



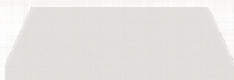
314910



314030



323150



320965



314028



320993



320923



320937



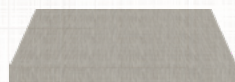
338621



385910



338772



338773



314398



314402



314154



338623



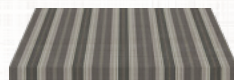
323069



315105



320835



320823



320886



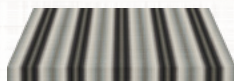
323093



320958



323095



320493



320838



323112



320734



315352



338655



320888



320830



## BLUE FABRIC COLLECTION



323014



314011



323107



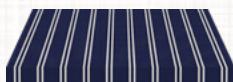
314858



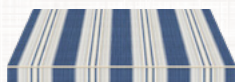
338776



314153



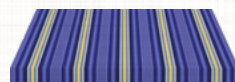
320560



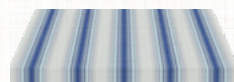
323057



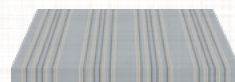
323055



320409



320190



320556



320584



323058



323119



320573



364051



320559





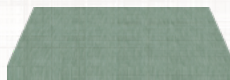
## GREEN FABRIC COLLECTION



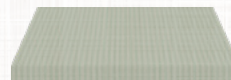
314362



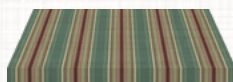
323151



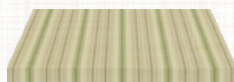
338775



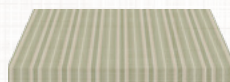
338625



320914



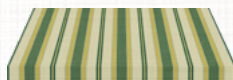
364203



320671



320253



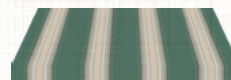
364598



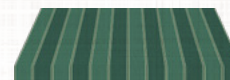
323005



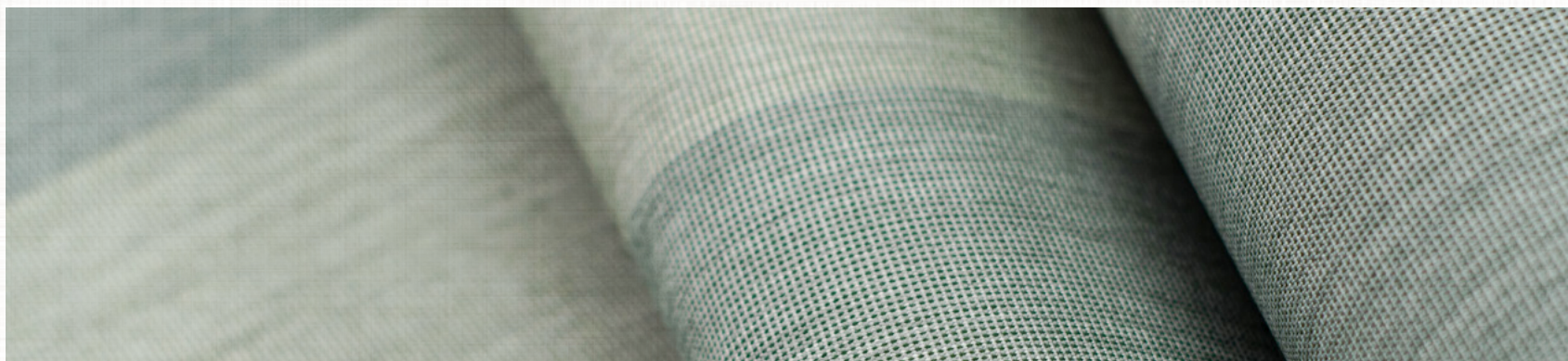
338674



320664



320666





## RED/YELLOW FABRIC COLLECTION



314001



314763



338777



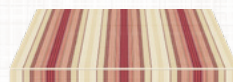
338779



320439



320186



323001



320458



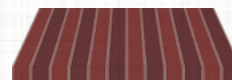
320758



323042



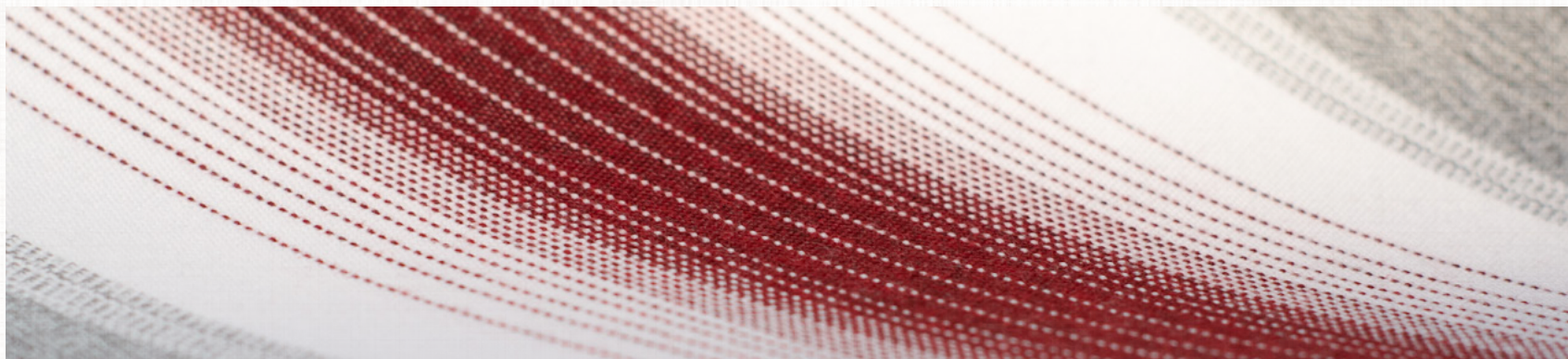
323041



320446



338657





## WARRANTY & NATURAL PROPERTIES OF ACRYLIC FABRIC

**LIMITED 10-YEAR WARRANTY:** All of our acrylic fabrics are covered by a limited 10-year warranty against mildew, rot, and fading. Complete details are provided in warranty card upon installation.

Solution-dyed acrylic fabrics are high-performance, long lasting products which are manufactured under the highest standards of quality and precision. Solution dyeing means our colors are locked into the fibers so they can't wash out or run. Consequently, they resist fading from the sun, wind, and rain, remaining rich and vibrant. Our fabrics strongly resist mildew and rot. Plus, they will not harden, crack, or peel in the way vinyl can.

Utmost care of the fabric is taken in the cutting, sewing, handling, assembly, shipping, and installation. Because of the nature of some awning, screen, and shelter products, the process by which it is manufactured, and the type of fabric finish required because of environmental protection, the following properties may occur naturally to some extent in all acrylic fabrics. However, they do not affect the value, quality, usability, durability, or warranty of the product.

**Crease Marks:** This light discoloration of the fabric finish occurs when the fabric may be folded or gathered to accommodate proper fabrication. (See example below.) A marbling effect may also occur from gathering or bunching of the fabric. The discoloration may be more noticeable on solid colored fabrics and be more obvious when viewed in brighter light, such as sunlight.

**Dimpling:** This is a natural occurrence with awning products which require the fabric to be rolled onto a tube. When the fabric is rolled onto tubes, the sewn seams and hems are twice as thick as the fabric center. Single-layered center panels roll up tighter than the seams and hems, therefore creating dimpling next to the seams, hems, and fabric panel center. (See examples below.)



Crease Marks



Seam and Hem Dimpling



Center Panel Dimpling

**Care and Cleaning:** Acrylic Fabric should be cleaned regularly before substances such as dirt, roof particles, etc., are allowed to accumulate on and become embedded in the fabric, which could allow mildew to grow. The fabric can be cleaned without being removed from the installation. Simply brush off any loose dirt, roof particles, etc.; hose down and clean with a mild solution of natural soap in lukewarm water (no more than 100 degrees F.) Rinse thoroughly to remove soap. DO NOT USE DETERGENTS. Allow to air dry. Since acrylic fabrics receive a water repellent treatment, they can resist a light, short shower. For heavier, more persistent showers, though, the awning should be rolled up in order to prevent damage. Awning fabric which has been rolled up while wet should be unrolled to dry as soon as possible.

# Sunesta®

AWNINGS & OUTDOOR COMFORT

## FABRIC COLLECTION



[www.sunesta.com](http://www.sunesta.com)